

RAYNOR®
DURASHUTTER™
ROLLING COUNTER SHUTTERS



DuraShutter SELECT in aluminum

A T T R A C T I V E

D U R A B L E

D E P E N D A B L E

RAYNOR®
ROLLING DOORS
Built to be worry free.™

RAYNOR®
DURASHUTTER™
 ROLLING COUNTER SHUTTERS

With a proven track record for durability, DuraShutter counter shutters are ideal for retail and commercial facilities where both appearance and dependability are important.

DuraShutter STANDARD

Designed for a variety of common applications, this shutter provides Raynor reliability and durability to meet or exceed the requirements of daily use. Available with the widest selection of quality features and options.

DuraShutter SELECT

Available in aluminum or stainless steel, this shutter is ideal for applications requiring unique materials or performance characteristics to meet specific design requirements.



DuraShutter SELECT in stainless steel, with optional slip-in integral frame

Series MODEL	Slat Materials (Thickness)	Slat Profiles	Guides	Maximum Sizes	Maximum Sizes (Integral Frame Option)	Colors/Finishes
DuraShutter STANDARD	Steel (22 Ga.)	Flat Perforated Flat	Steel	20' Width 8' Height	11'6" Width 5'6" Height 4 1/2"-12" Wall Thickness	Gray, 187 ArmorBrite™ Colors
DuraShutter SELECT	Aluminum (.05") Stainless Steel (22 Ga.) Steel (22 Ga.)*	Flat	Stainless Steel Aluminum	20' Width 8' Height	11'6" Width 6'6" Height 4 1/2"-12" Wall Thickness	Stainless Steel #4, Clear-Anodized

NOTE Contact factory for special sizes.

WARRANTY DuraShutter counter shutters carry a 1-year limited warranty. See your local Raynor Dealer for complete details.

* With stainless steel integral frame option only.

MODEL OPTIONS AND UPGRADES

① **187 ArmorBrite™ colors.**
Choose your color! DuraShutter frames and curtains can be powder-coated in any of 187 colors to match your design scheme.

② **Brush seals.**
A brush-type guide (shown) or header seal increases energy efficiency.



INTEGRAL FRAME OPTIONS

Integral Frame Counter Shutters Are Ready To Go.

Offered in built-in and slip-in styles, Raynor integral frame counter shutters provide maximum strength and security with metal frames, shutters and sills that are factory-assembled as a complete unit. Both options are available with manual, crank or motor operation. Each offers a clean appearance and unique advantages depending on your application needs.



Slip-in style frames.

For your existing walls, the slip-in style frames are a sleek and easy solution.

Shown: DuraShutter SELECT in stainless steel



Built-in style frames.

For masonry walls not yet constructed, built-in style frames provide a clean, finished appearance.

Shown: DuraShutter STANDARD with optional ArmorBrite™ finish

TUBE MOTOR OPERATION



Eclipse™ tube motors.

Are ideal for easy and convenient operation. Concealed inside the barrel assembly, this quiet torqued motor runs smoothly at the touch of a button.

OTHER OPERATION METHODS



PowerHoist operators.

For larger sized counter shutters, choose a reliable 1/4 hp PowerHoist™ jackshaft operator.



Motor cover.

Motor covers are helpful for noise reduction and provide an attractive look.



Crank operation.

Hand-crank operation is available on all DuraShutter counter shutters.

Gray

DuraShutter STANDARD counter shutters are available in Gray. Counter shutter frames and curtains can also be powdercoated in any of 187 ArmorBrite™ colors.

Stainless Steel

Aluminum

DuraShutter SELECT counter shutters are available in Stainless Steel with a #4 finish or in Aluminum with a clear-anodized finish.

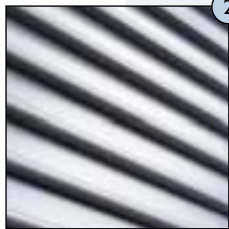
Every DuraShutter counter shutter is built for superior performance and includes the features listed below. For additional options, please see the inside pages.



1

Curtain hood.

Curtain hoods are square and designed for maximum structural rigidity.



2

Curtain.

All DuraShutter curtains are constructed with heavy-duty steel, stainless steel or aluminum flat slats.



3

Counterbalance system.

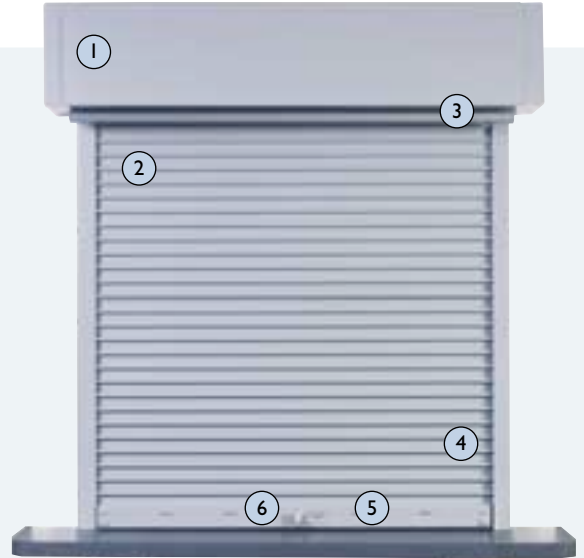
A torsion-spring-operated system, enclosed in a structural steel barrel, effectively counterbalances the door for a minimum of 7,500 cycles.



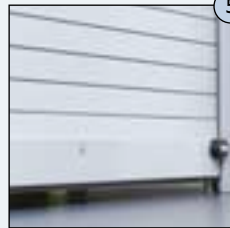
4

Guides.

Guides, constructed of steel, stainless steel or aluminum, allow for face or jamb mounting. Wool pile strips inside the guides provide smooth, quiet operation.



(DuraShutter STANDARD model shown)



5

Bottom bar.

Curtain bottoms are constructed of steel or stainless steel with a foam edge to protect the sill. Extruded aluminum bottom bars feature a vinyl seal.



6

Locks.

Cylinder or thumb-turn locks help keep your building secure. Thumb-turn locks are standard on shutters with manual or crank operation.

APPLICATION GUIDE

	DuraShutter STANDARD	DuraShutter SELECT
Cafeteria/Concessions	●	●
High Security	○	○
Pharmacy	●	●
Retail Service	●	●

● Best Choice ○ Good Solution



**Depend On Professional Installation
By Your Raynor Dealer**

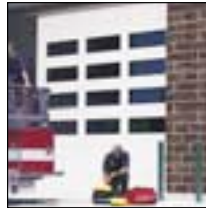
When you select Raynor, you're not just getting a superior commercial door, you're getting professional door installation and service expertise.

Every Raynor door is installed by an experienced Raynor professional. And that means added benefits for you. Because it's done right the first time, your door will deliver performance and reliability from the

day it's installed. Your technician will check your door for everything from safety to performance to appearance.

Trust your Raynor door to someone who knows it better than anyone else—your professional Raynor Dealer. We have over 600 authorized dealers serving North America and over 50 countries worldwide.

Raynor also offers a full line of sectional, rolling, fire and traffic doors as well as security grilles. See your Raynor Dealer or visit www.raynor.com for more information.



RAYNOR
ROLLING DOORS

Built to be worry free.™

Raynor Worldwide P.O. Box 448, 1101 East River Road, Dixon, IL 61021-0448

CALL
1-800-4-RAYNOR

CLICK
www.raynor.com

FAX
1-815-288-7142

Exclusively Distributed By:



This information was as complete and factual as possible at the time it was printed. We do, however, reserve the right to make changes in product specifications and availability without notice. Features and options may be different in countries other than the United States. Product colors have been reproduced as well as possible with present commercial printing processes. For absolute accuracy in color matching, use actual product samples.