

RAYNOR®
DURACOIL™
ROLLING SERVICE DOORS



DuraCoil OPTIMA, gray, with flat steel slats

R U G G E D

D U R A B L E

R E L I A B L E

RAYNOR®
ROLLING DOORS
Built to be worry free.™

RAYNOR®
DURACOIL™
 ROLLING SERVICE DOORS

Rugged DuraCoil service doors—with aluminum, steel or stainless steel slats—are made to last. When you want the best, specify DuraCoil.

DuraCoil OPTIMA

Designed for high-security applications or oversized openings, sturdy 18-gauge slats and structural steel guides combine to make this our strongest rolling service door.

DuraCoil STANDARD

This full-featured product delivers Raynor reliability and durability to meet or exceed the requirements of daily use. Offered with our widest selection of quality features and options, this model is best suited for most service door applications.

DuraCoil BASIC

This 24-gauge product with roll-formed guides is a simple solution for typical applications requiring Raynor quality and durability.

DuraCoil SELECT

When facility design or environment requires unique materials, this model is offered exclusively with aluminum or stainless steel slats and options to meet specific design performance.



DuraCoil STANDARD, gray, with flat steel slats

Series MODEL	Slat Materials (Thickness)	Slat Profiles	Guides	Maximum Sizes	Colors/Finishes
DuraCoil OPTIMA	Steel (18 Ga.)	Flat Large Contour Insulated Flat	Structural Steel	Widths to 40' Heights to 30'	Gray, Tan, 187 ArmorBrite™ Colors
DuraCoil STANDARD	Steel (22 Ga.) Steel (20 Ga.) Steel (24 Ga.)	Flat Large Contour Small Contour Insulated Flat Perforated Flat	Structural Steel	Widths to 30' Heights to 30'	Gray, Tan, 187 ArmorBrite™ Colors
DuraCoil BASIC	Steel (24 Ga.)	Flat	Roll-Formed Steel	Widths to 14' Heights to 14'	Gray, Tan
DuraCoil SELECT	Stainless Steel (22 Ga.) Stainless Steel (20 Ga.) Aluminum (.05 Ga.) Aluminum (.04 Ga.)	Flat Insulated Flat Perforated Flat	Structural Steel Stainless Steel Aluminum	Widths to 26' Heights to 30'	Stainless Steel #4, Clear-Anodized

NOTE Contact factory for special sizes.

WARRANTY DuraCoil service doors carry a 1-year limited warranty. See your local Raynor Dealer for complete details.

MODEL OPTIONS AND UPGRADES

① 187 ArmorBrite™ colors.

Choose your color! Nearly every Raynor rolling door component (curtain slats, bottom bars, guides, hoods and head plates) can be powdercoated in any of 187 colors for an attractive appearance and exceptional durability.

② High-cycle applications.

For years of reliable operation in heavy-use applications such as multi-tenant parking facilities, choose high-cycle torsion springs or the FeatherLite™ Weight Counterbalance System (shown).

③ Head plate cover.

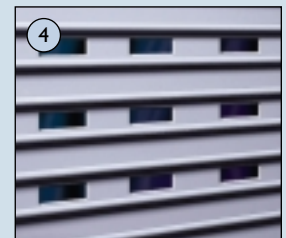
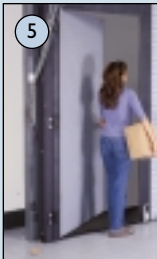
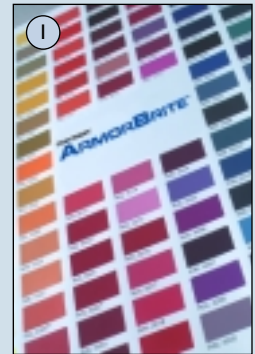
Head plate covers are available for an attractive, finished appearance and help to protect your investment by keeping out dust and grime.

④ Vision panels.

For light transmission and visibility, choose 4" x 1" acrylic vision slots for large contour, flat and insulated flat curtain slats. Fenestrated curtains with open 4" x 1" slots are also available for flat slat curtains only.

⑤ Pedestrian doors.

Pedestrian doors are designed for convenient entry and to help minimize energy loss.



SLAT STYLE OPTIONS



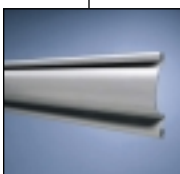
Flat slats.

The most architecturally pleasing slat profile, flat slats are ideal when weatherseal is used.



Flat insulated slats.

Designed for any application demanding greater thermal efficiency.



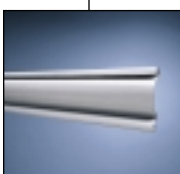
Large contour slats.

Available in virtually unlimited widths, large contour slats are typically specified for larger-sized openings.



Flat perforated slats.

Engineered for applications where airflow, visibility and security are desired.



Small contour slats.

An excellent choice for smaller opening widths, small contour slats are the best value for opening sizes up to 14' x 14'.

POWERHOIST™ OPERATORS



PowerHoist operators.
Raynor offers a full line of rugged PowerHoist operators for jackshaft operation.



Motor cover.
Motor covers are helpful for noise reduction and provide an attractive look.



Control options.
A variety of control stations, photoelectric eyes and remote activation devices are available.

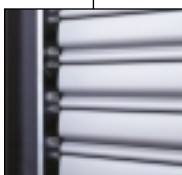
ENERGY-SAVING OPTIONS



Hood weatherseal.
A reinforced neoprene sheet rests on the curtain to minimize air infiltration. A header brush seal is also available.



Vinyl guide seal.
A vinyl extrusion decreases energy costs and reduces air infiltration by sealing the side of the door when closed.



Brush guide seal.
A brush-type seal increases the energy efficiency of curved slat doors.

Gray

Tan

Stainless Steel

Aluminum

For DuraCoil door color options, please refer to the chart at left.

Every DuraCoil door is built for superior performance and includes the features listed below. For additional options, please see the inside pages.



1

Curtain hood.

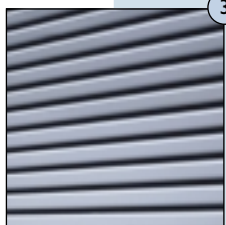
DuraCoil service doors feature a full-width, 24-gauge steel hood to protect your investment. Optional on DuraCoil BASIC.



2

Counterbalance system.

A smooth-running, torsion-spring-operated system is packed into each barrel assembly. Industrial head plates and bearings provide long cycle life.



3

Curtain.

Each DuraCoil curtain is assembled with durable, heavy-gauge slats in a variety of materials and gauges.



4

Guides and end locks.

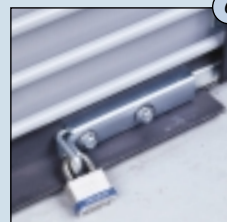
Rugged structural steel angle guides provide maximum support for curtain slats. Zinc-plated, malleable cast-iron end locks prevent lateral movement of the curtain slats.*



5

Bottom bar.

Curtain bottoms are structurally reinforced with a minimum of two steel angles for maximum durability. A bottom astragal is included on all doors.



6

Security locks.

To keep your building secure, manually-operated DuraCoil doors are equipped with slide locks.

*DuraCoil BASIC doors are supplied with roll-formed guides and stamped metal end locks.

APPLICATION GUIDE

	DuraCoil OPTIMA	DuraCoil STANDARD	DuraCoil BASIC	DuraCoil SELECT
Agricultural Buildings	●	○	○	
Cafeteria/Concessions		○	○	●
Car Wash/Corrosive Environments	○	○	○	●
Commercial/Multi-Tenant	○	●	○	
Fire Station/Ambulance	●	○		○
High Security	●	○		○
Large Opening Size	●	○		○
Mining, Pulp & Paper	●	○		
Service Station	○	●	○	○
Shopping Mall/Retail	○	●	○	○
Thermal Environments	●	●		○
Transit Facility/Truck Terminal	○	●	○	
Underground Parking	○	●	○	
Noninsulated Storage	○	○	●	
Warehouse/Manufacturing	○	●	○	

● Best Choice ○ Good Solution ○ Applicable



**Depend On Professional Installation
By Your Raynor Dealer**

When you select Raynor, you're not just getting a superior commercial door, you're getting professional door installation and service expertise.

Every Raynor door is installed by an experienced Raynor professional. And that means added benefits for you. Because it's done right the first time, your door will deliver performance and reliability from the

day it's installed. Your technician will check your door for everything from safety to performance to appearance.

Trust your Raynor door to someone who knows it better than anyone else—your professional Raynor Dealer. We have over 600 authorized dealers serving North America and over 50 countries worldwide.

Raynor also offers a full line of sectional, rolling, fire and traffic doors as well as security grilles. See your Raynor Dealer or visit www.raynor.com for more information.



RAYNOR
ROLLING DOORS

Built to be worry free.™

Raynor Worldwide P.O. Box 448, 1101 East River Road, Dixon, IL 61021-0448

CALL

1-800-4-RAYNOR

CLICK

www.raynor.com

FAX

1-815-288-7142

Exclusively Distributed By:



This information was as complete and factual as possible at the time it was printed. We do, however, reserve the right to make changes in product specifications and availability without notice. Features and options may be different in countries other than the United States. Product colors have been reproduced as well as possible with present commercial printing processes. For absolute accuracy in color matching, use actual product samples.